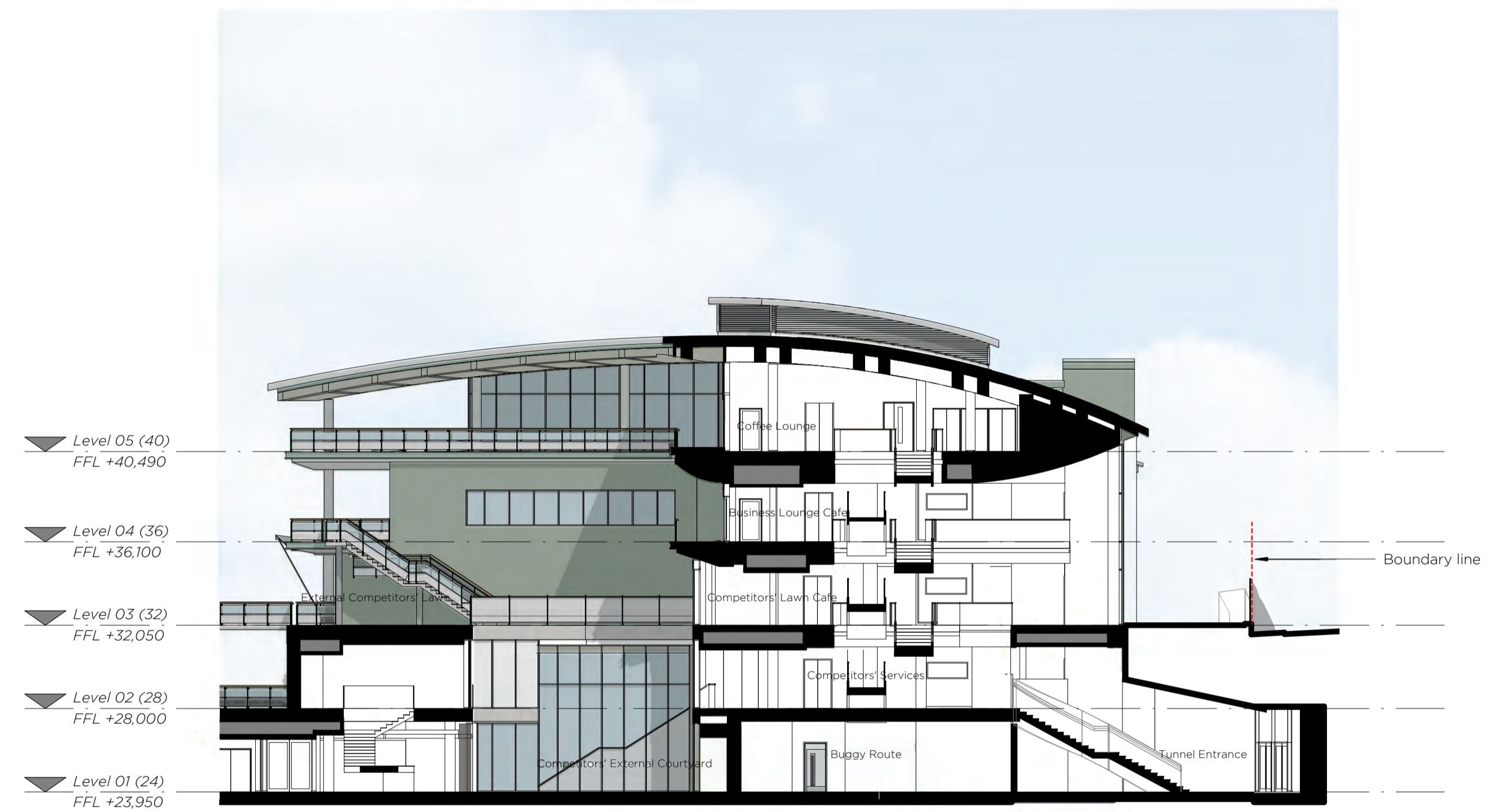


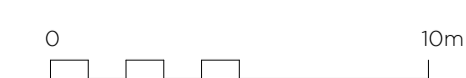
Planning Section AA



Planning Section BB

Rev.	Date	Description
P01	23/10/2020	First Issue
P02	28/10/2020	Issued for Planning

Notes  
1. To be read in conjunction with all relevant information  
2. Do not scale from drawing



<b>LANGSTAFF DAY</b> ARCHITECTS		<i>project</i> Millennium Building Project <i>for</i> AELTG <i>title</i> Proposed GA Sections - AA and BB
		<i>address</i> 321 Edinburgh House, 170 Kennington Lane London SE11 5DP <i>e-mail</i> office@langstaffday.co.uk <i>suitability</i> S2 - For Information <i>scale</i> 200@A1
<i>drawing number</i> 51335-LDA-MB-ZZ-DR-A-PL301 <i>rev.</i> P01		

This page is intentionally left blank